

PRODUCT DATASHEET

FC 22 W/3000K

LUMILUX T5 FC | Circular fluorescent lamps 16 mm, with 2GX13 base



AREAS OF APPLICATION

- Public buildings
- Offices
- Restaurants
- Industry
- Shops
- Supermarkets and department stores
- Hotels

PRODUCT BENEFITS

- Extremely economical
- Good quality of light
- Excellent luminous flux
- Excellent uniform illumination with no shadows
- Good average life (with OSRAM ECG)

PRODUCT FEATURES

- Good color rendering group: 1B (R_a : 80...89)
- Dimmable (from 100...1 % with QTi DALI/DIM ECG)
- Single-ended round fluorescent lamp
- Tube diameter: 16.0 mm



TECHNICAL DATA

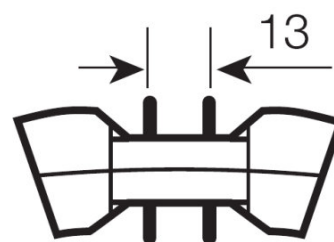
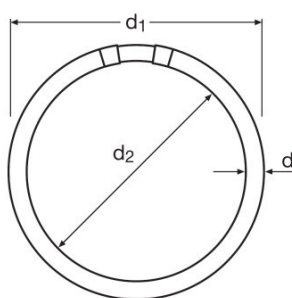
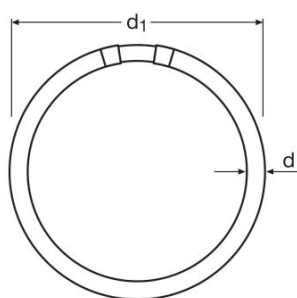
Electrical data

Rated wattage	22.30 W
Nominal wattage	22.00 W

Photometrical data

Rated lamp efficacy (standard condition)	81 lm/W
Color rendering index Ra	≥80
Rated luminous flux	1800 lm
Luminous flux at 25 °C	1900 lm
Light color	830
Rated color temperature	3000 K
Nominal luminous flux	1900 lm
Light color (designation)	LUMILUX Warm White
Rated LLMF at 2,000 h	0.85
Rated LLMF at 4,000 h	0.83
Rated LLMF at 6,000 h	0.80
Rated LLMF at 8,000 h	0.80
Rated LLMF at 12,000 h	0.75
Color temperature	3000 K
Luminous flux	1900 lm
Color rendering index Ra	≥80

Dimensions & weight



Tube diameter	16 mm
Length	230.0 mm
Length with base excl. base pins/connection	225.00 mm
Diameter	16.0 mm
Maximum diameter	16.0 mm

Temperatures & operating conditions

Rated ambient temp.w.max.luminous flux	35.0 °C
--	---------

Lifespan

Service life	8000 h ¹⁾
Lifespan	12000 h ¹⁾
Rated lamp survival factor at 2,000 h	0.99
Rated lamp survival factor at 4,000 h	0.99
Rated lamp survival factor at 6,000 h	0.98
Rated lamp survival factor at 8,000 h	0.92
Rated lamp survival factor at 12,000 h	0.50
Operation mode LLMF/LSF	HF
Rated lamp life time	12000 h
Nominal lamp life time	12000 h

¹⁾ With preheat ECG

Additional product data

Base (standard designation)	2GX13
Mercury content	3.0 mg
Show WEEE picto	Yes
Product remark	Suitable for ECG operation only

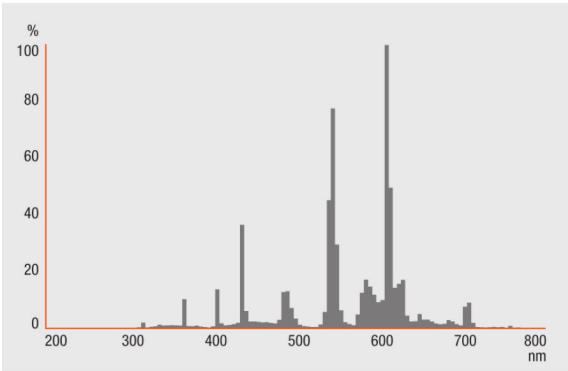
Capabilities

Suitable for indoor	Yes
---------------------	-----

Certificates & standards

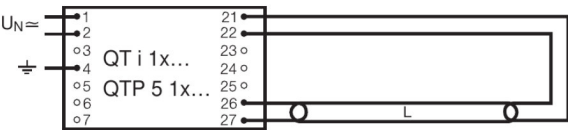
Energy efficiency class	A
Energy consumption	25 kWh/1000h

Light Distribution

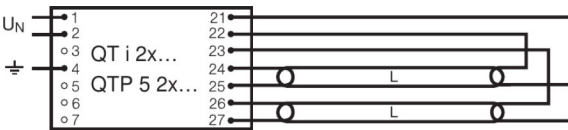


Spectral power distribution

Wiring Diagram



Wiring diagram



Wiring diagram